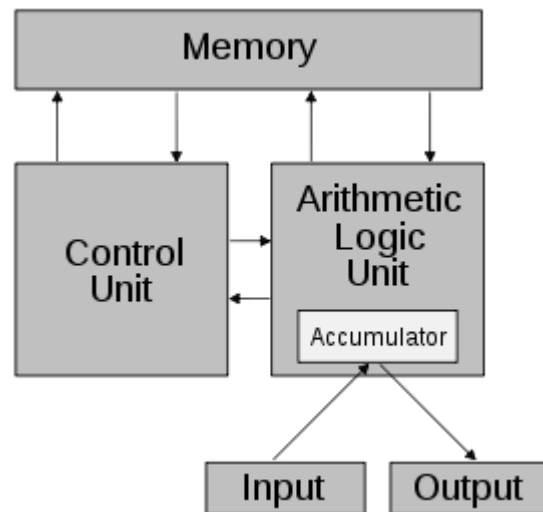


Towards the Realization of a Prototype Brain Computer

Shigeo Sato

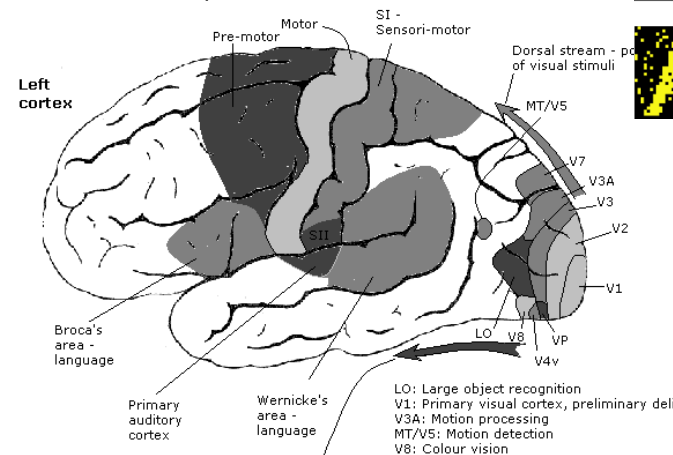
Research Purpose

For implementation of a brain computer, developments of related techniques such as processing, device fabrication, circuit design, and **architecture** are necessary. As a first step for finding suitable architecture, it is important for us to design a **prototype brain computer** by considering functions required for a specific application. This leads us to expand the scope of applications, and then we seek general purpose computing with a brain computer for practical use of it.

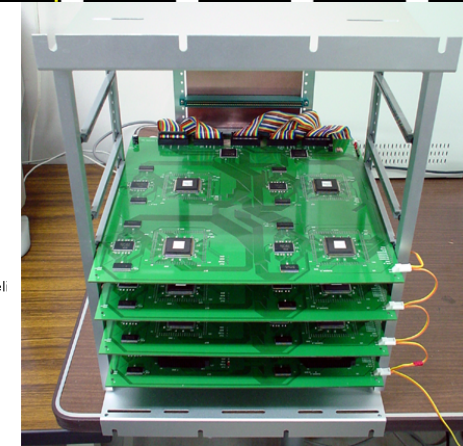


von Neumann
Architecture

Cortex: Functional anatomy



Hierarchical Structure and
Functional Localization of
Human Brain



Neurochips