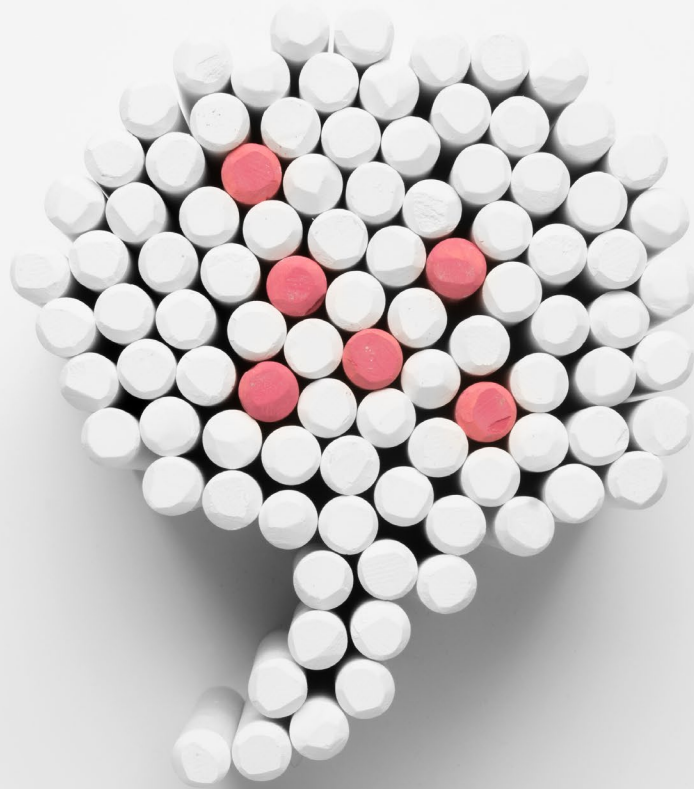


# 2<sup>nd</sup> ASEF ACCESS TO YOUNG LEADERS SUMMIT YOUTH EMPLOYMENT

4-8 May 2017, Seoul, Korea. In conjunction with the 6<sup>th</sup> ASEM Education Ministers' Meeting (ASEM ME6)

## FAQ



Organised by



In Partnership with



Supported by



## ESSENTIALS

### I'm interested, what now?

Glad to hear that you are ready to seize this opportunity and take part in shaping the Asia-Europe landscape on youth employment!

Submit the online application [here](#).

### When is the deadline?

We accept applications till **Monday, 20 March 2017, GMT 23.59 hours**, be sure to apply by then!

### When will the results be out?

We will announce the application outcome in batches starting from March 2017. You will receive an email with your result and you can also follow our [ASEFEdu Facebook page](#) for the latest updates.

### Who can apply?

Citizens of any of the [51 Asia-Europe Meeting \(ASEM\) partner countries](#)

Idea and action leaders ranging from students, academics to young professionals from all societal sectors

Between the ages of 18 to 30

Strong command of English (written and verbal)

Ready to actively participate in the 4-week online preparatory phase

### What are the steps for a smooth application process?

For us to consider your application please keep in mind the following steps:

- 1) Submit the online application [here](#)
- 2) Keep an eye on the confirmation email upon your successful submission; if you do not receive it, it might have landed in your junk/spam folder

### I am an ASEM country national studying in a non-ASEM country. Am I eligible to apply?

Definitely! As long as you are an ASEM national, you may apply regardless of your country of residence.

### I am a non-ASEM country national studying in an ASEM country. Am I eligible to apply?

No, only nationals of the 51 ASEM partner countries are eligible to apply. See the list of countries [here](#).

### I am a young professional/student older than 30 years. Am I still eligible to apply?

If you believe that you meet all other criteria and have a suitable profile, you may still apply and your application might be considered on an exceptional basis. However, those who fulfill all application requirements will be prioritised.

**I have not been directly involved in any activities related to Youth Employment. Can I still apply?**

Of course! We always seek to gather a diverse group, including the “unusual suspects”. Our experience is that a multicultural and cross-disciplinary team enjoys the most from our educational projects. At ASEFYLS we seek people with fresh and open perspectives!

## PROGRAMME

**Pre-event phase**  
**Do I need to prepare anything before the journey?**

The 2<sup>nd</sup> ASEF Young Leaders Summit (ASEFYLS2) integrates an online-based preparatory phase where you will join a crash-course on policy development as well as partake in individual and group tasks. The online preparatory phase will gear you for an idea-stimulating time on-site in Korea!

**On-site phase**

Please refer to the [Open Call & Overview](#) and [Programme](#).

**Post-event phase**  
**Are there any commitments after the project?**

Some participants from ASEFYLS2 are engaged in various capacities including but not limited to:

- a) ASEM Ministerial Meetings/High-level forums:  
Unique chance to meet senior government officials and policy makers e.g. ASEM Ministers of Labour and Employment.
- b) ASEF Capacity Trainings in Greece and Lao PDR:  
A workshop-series closely linked to the ASEFYLS2 that tackles concepts and issues raised during the Summit.
- c) Alumni-led initiatives:  
Opportunity to build networks with the broader ASEF community.

We always strive to understand the impact of our projects and may get in touch with former participants to conduct an impact assessment.

## FEES

**Is there a participation fee?**

There are no participation/registration fees for the Summit.

## LODGING & MEALS

**Does ASEF provide accommodation during the event?**

Organisers will provide accommodation for the participants who are travelling from abroad.

**How about food?**

Meals will be provided during the conference as indicated in the programme.

**I have special dietary requirements, will this be an issue?**

For participants who have special dietary requirements, organisers will make arrangements as much as possible to adjust the meals accordingly.

**TRAVEL, VISA  
& INSURANCE**

**What about the travel cost?**

We will provide a travel subsidy from your country of residence to the starting point to Korea and back. The subsidy could also cover local transportation (home-airport-home). The amount will be announced to the selected participants in the confirmation letter.

**How about visa fees and insurance?**

Yes, insurance and visa fee (if applicable) could be covered under the capped subsidy.

**Can I receive a support letter for the visa?**

Of course, we will issue a visa support letter to those who require it.

**Can I receive a support letter to submit to my university/workplace?**

Yes, upon your request we can issue a letter to be given to the university/workplace.

**QUERIES  
& APPLY**

More questions spinning in your mind? Drop us an email at: [asefyls@asef.org](mailto:asefyls@asef.org)

If everything is clear, then you are ready to [apply!](#)

**CHALKS & USB**

”Rapid technological and socio-economic changes call for innovative approaches to education and training, while still valuing traditionally proven methods. The use of chalks and USB in the ASEFYLS design is to signify both past and present-day learning tools coupled with the importance of adaptability and cohesion”